



CELESTE
PORTOLA SPRINGS®



Living. Room.

The Comfort and Joy of Home

PRIMNÉE LIFE.

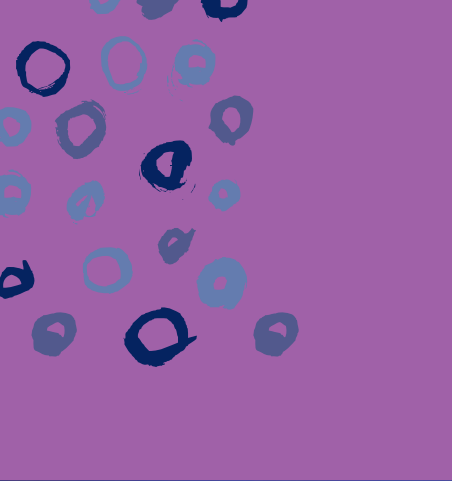


New Courtyard Homes Infused with Style

Introducing a new Irvine address brimming with possibility. Innovative courtyard designs offer bright and spacious interiors so you can relax, celebrate and plan for happy times ahead. Exquisite details that make all the difference bring beauty and function to every room.

Enjoy the outdoors surrounded by the natural tranquility of Portola Springs Village. Celeste's fenced yards or private decks provide the perfect backdrop for family gatherings, Sunday brunch and special birthdays.





*Life is Sweet When
You Love Where You Live*





The Fun and Leisure of a Coveted Irvine Lifestyle

Portola Springs Village delivers recreation, relaxation and outdoor adventure to your doorstep. Explore miles of walking trails and amenity-rich parks, including Round Canyon Park just steps from home. Make a splash in the circular pool or picnic in the shade.

Celeste's easily accessible Irvine location brings convenience to daily life. Business, shopping and entertainment destinations are located nearby and children grades K-12 attend award-winning Irvine Unified schools.

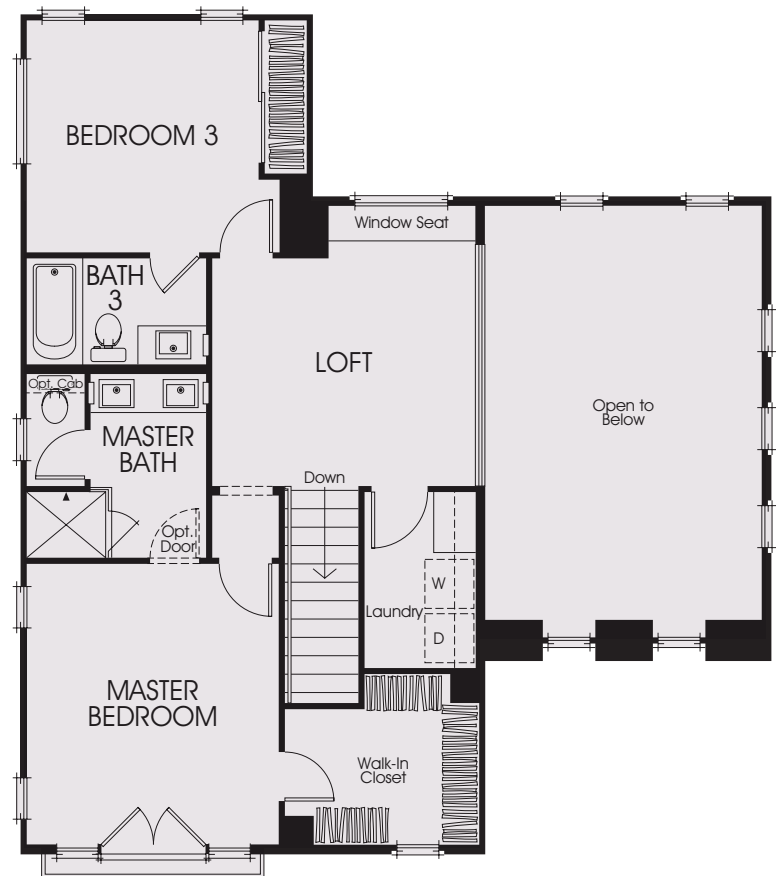


Residence 4R

Approx. 1,596 Sq. Ft. • 3 Bedrooms • 3 Baths Plus Powder Room • Loft
Fenced Yard • 2-Car Attached Garage



First Floor



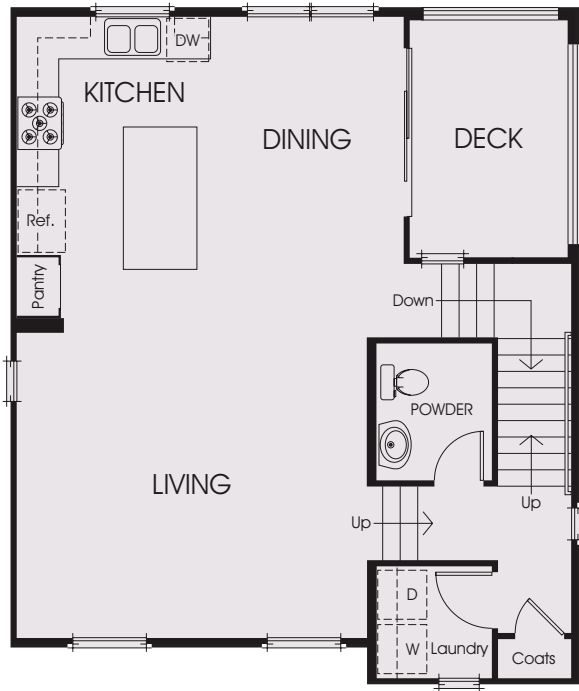
Second Floor

French Doors and Juliet Balcony occur per elevation. Windows, window sizes and shapes, walls, porches, decks, doors and garages vary per elevation and home location. See sales agent for details.

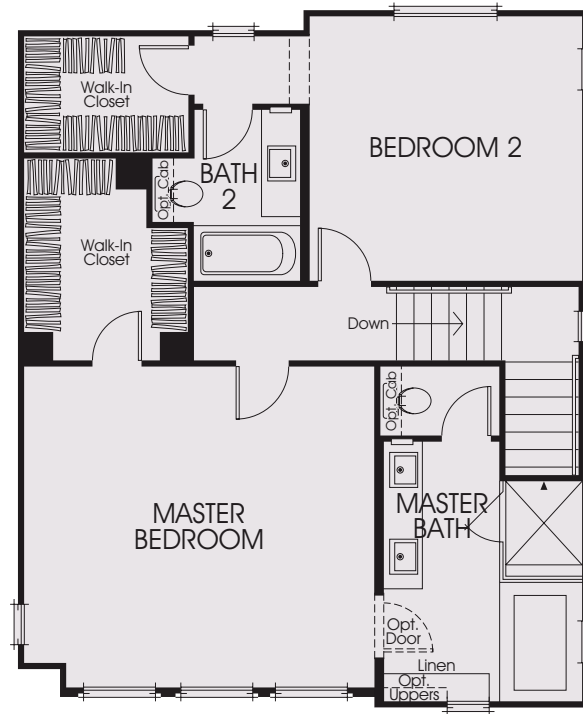
Residence 1R

Approx. 1,792 Sq. Ft. • 3 Bedrooms • 3 Baths Plus Powder Room

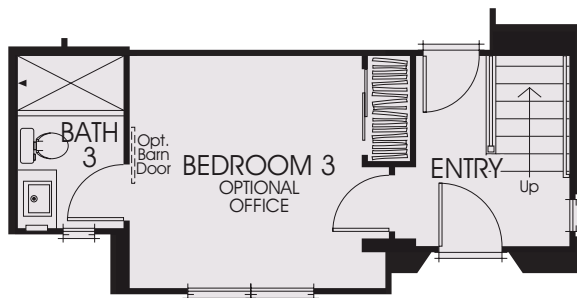
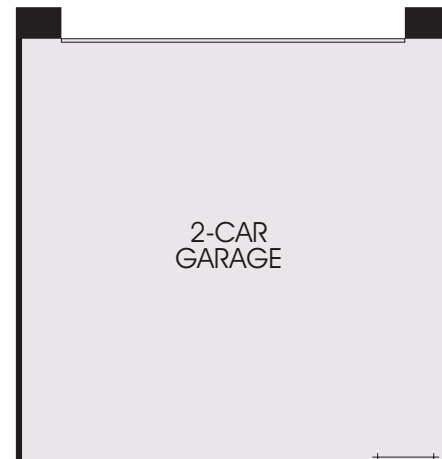
Optional Office at Bedroom 3 • Covered Deck • 2-Car Attached Garage



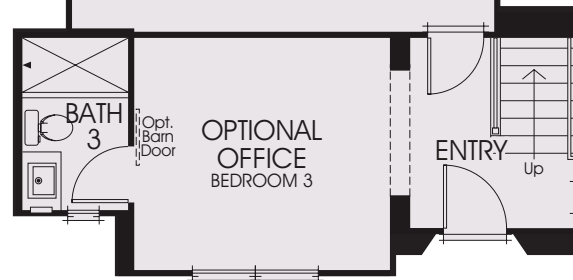
Second Floor



Third Floor



Standard Bedroom 3

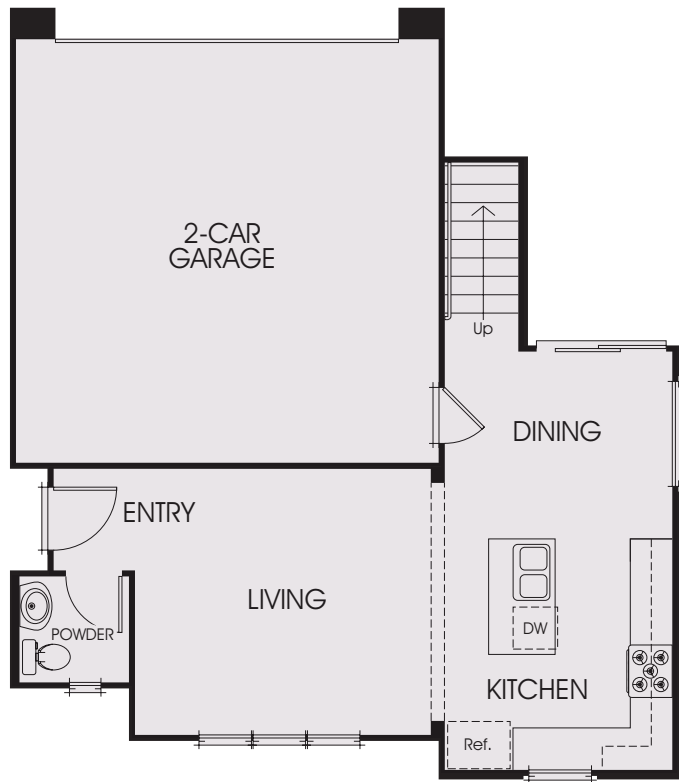


First Floor

Windows, window sizes and shapes, walls, porches, decks, doors and garages vary per elevation and home location. See sales agent for details.

Residence 2R

Approx. 1,460 Sq. Ft. • 3 Bedrooms • 2 Baths Plus Powder Room • Loft
Fenced Yard • 2-Car Attached Garage



First Floor



Second Floor

Windows, window sizes and shapes, walls, porches, decks, doors and garages vary per elevation and home location. See sales agent for details.

Residence 3R

Approx. 1,600 Sq. Ft. • 3 Bedrooms • 2 Baths Plus Powder Room
Loft • 2-Car Attached Garage



French Doors and Juliet Balcony occur per elevation. Windows, window sizes and shapes, walls, porches, decks, doors and garages vary per elevation and home location. See sales agent for details.

Danzon Living Details.

LIFESTYLE KITCHENS

- Bertazzoni Appliance Package in Stainless Steel Includes a 4-Burner Freestanding Gas Range with Microwave/Hood and Bosch Dishwasher
- Deluxe Satin Finish White Thermafoil Cabinetry with Shaker Style Doors, Satin Nickel Knobs and Under Cabinet Task Lighting
- Della Terra Quartz Kitchen Counters in Vegas with 6-Inch Splash and Full Splash at Range
- Generous Island Per Plan
- Stainless Steel Single Basin Sink with Moen Arbor Pull-out Faucet in Spot Resistant Stainless Steel
- Cabinet Depth Refrigerator Space Pre-plumbed for Ice Maker

LUXURIOUS MASTER SUITES

- Master Bath features Stall Shower with 3"x 6" Matte White Ceramic Tile Surround and Clear Glass Enclosure in Bright Chrome
- Elegant Bathtub, Residence 1
- Vanity includes Dual Under Mount Sinks with White Cultured Marble Countertop and Stylish Moen Voss Polished Chrome Faucets
- Spacious Walk-in Closets

INTERIOR LIVING

- White Thermafoil Cabinetry with Shaker Style Doors and Satin Nickel Knobs
- Convenient First Floor Bedroom, Residence 1 and 4
- Designer-selected Tile at Entry, Kitchen, Baths and Laundry with Plush Carpet at Living Areas
- Two-panel Smooth Interior Doors with Schlage Andover Satin Nickel Hardware
- Bullnose Corners Throughout
- LED Recessed Lighting (Standard Locations Vary Per Plan). Residence 4 Includes Pendant Light at Dining Room
- Structured Wiring with Enhanced CAT-5E Wire to Support Phone and High Speed Internet Multi-media Outlet to Support Phone/Data and Television at Great Room. TV Data Outlet Standard at all Bedrooms.
- Powder Room Includes Kohler Pedestal Sink with Stylish Moen Voss Polished Chrome Faucet and Beveled Mirror
- Interior Laundry Room with Cabinetry

ARCHITECTURAL AND ENVIRONMENTALLY EFFICIENT DETAILS

- Diverse and Harmonious Italianate, Spanish Mission and Spanish Colonial Exteriors with Fire Resistant Concrete Tile Roofs
- Private Deck or Fenced Yard per Plan (Size and Configuration Vary Per Plan and Location)
- Attached 2-Car Garage with Metal Insulated Roll-up Garage Door with Opener and Two Transmitters
- Exquisitely Landscaped Walkways and Common Areas
- Energy Efficient Dual Glazed Vinyl Windows with Low-E Glass
- Thermatru Rustic Series Front Door with Baldwin Del Mar Entry Hardware in Venetian Bronze
- Central Air Conditioning with Programmable Thermostat and Whole House Fan
- High Efficiency 90% A.F.U.E. Gas Furnace
- State of the Art L.E.D. Recessed Lighting
- Efficient Tankless Water Heater
- Energy Efficient Radiant Barrier Roof
- Fire Sprinklers
- Energy Saving Solatube Daylighting System Included at Select Locations

Make it Your Own

Your home is your oasis, a place to express your personal vision. The California Pacific Home's Design Center offers a myriad of options from traditional to modern influences with the latest in design styles, finishes, textures and treatments. Our Design Counselors will provide assistance every step of the way to create your own unique living space.





Designing and building homes graced with classic luxury and unprecedented style is our business; cultivating relationships and building futures is our mission.

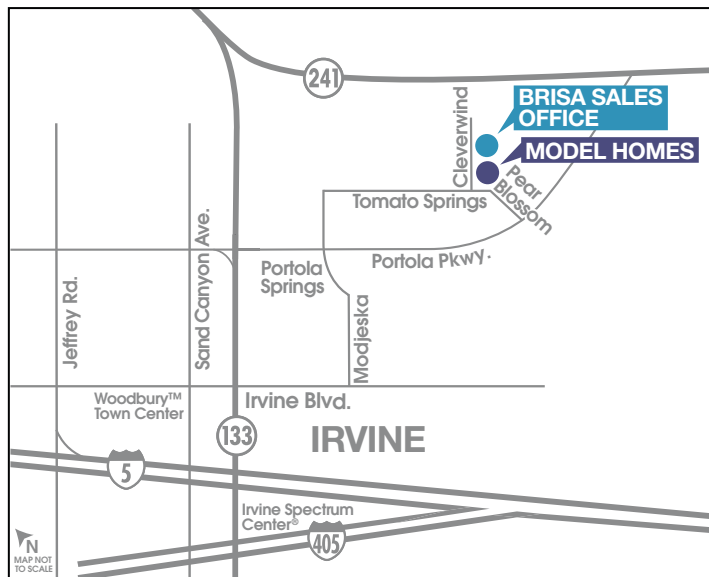
California Pacific Homes appreciates that you have choices, and we are privileged you have entrusted us to build your new home. Our philosophy of creating remarkable residential opportunities that are defined by architectural integrity and extraordinary craftsmanship is enhanced by our desire to build connections between our team and every homeowner.

A Legacy of Quality and Commitment

At California Pacific Homes, we are committed to bringing the art and expertise of homebuilding to the next level. We are driven by innovation, the energy of fresh ideas, and the value of forward thinking. An extraordinary approach to elegance, attention to detail, and solid construction is evident in each of our residences, while the enduring appeal of individual neighborhoods is complemented by their coveted locations. It is our honor to build for you. Welcome to the California Pacific Homes family.



CALIFORNIA
PACIFIC
HOMES



Sales Office at Brisa
124 Cleverwind, Irvine, CA 92618

949.833.6163

CALPACIFICHOMES.COM

CALIFORNIA
PACIFIC
HOMES



©2020 California Pacific Homes. All floorplans, amenities, facilities and maps portrayed in this brochure are artists' renderings of the improvements proposed for Celeste. Model photography is for illustrative purposes only. Actual development of the homes in Celeste may result in changes to the specifications, materials, designs, improvements, elevations, square footages, unit and lot sizes or any other alteration deemed necessary. Windows, walls, porches, balconies, decks and courtyards, doors, storage and garages vary per home location. Availability in all price ranges is subject to prior sale. Prices and product availability are subject to change without notice. As a resident of Irvine you automatically become a member of the Homeowner's Association. Monthly association dues maintain the quality of common area facilities. Irvine is included in an Assessment District and Community Facilities (Mello Roos) District. Portola Springs is a planned community developed by Irvine Community Development Company LLC, an affiliate of The Irvine Company LLC. "Masterfully Planned by the Irvine Company" means that the Irvine Company created the master land plan for all Irvine Company communities. The "master land plan" includes the overall entitlement and design of each community but does not include the design, construction and sale of homes. The design, construction and sale of homes is the sole responsibility of community builders. The Irvine Company is not designing, constructing or offering homes for sale in any community. Models do not reflect racial preference. DRE License #01277135. 5/2020

 **Villages of Irvine**[®]
Masterfully Planned by the Irvine Company

