



azalea

CYPRESS VILLAGE







Welcome home to the latest and final new home offering in Cypress Village. Steps from resort-style amenities, moments from everyday conveniences and minutes from Irvine Spectrum Center, Azalea by California Pacific Homes promises to be Irvine's new go to address! Say hello to homeownership today with these stylish new townhomes and flats!



Cypress Village is  
the place to be  
*conveniently*  
located near top shopping  
& dining destinations.



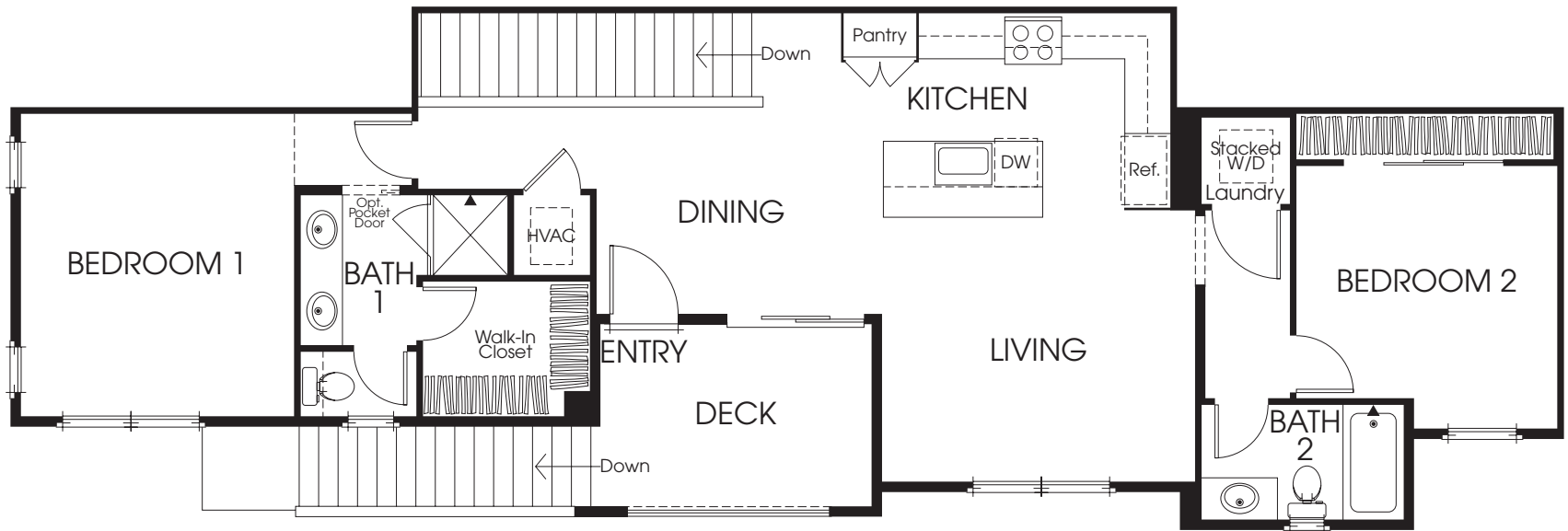


APPROX. 1,067 SQ. FT. | 2 BEDROOMS  
2 BATHS | 2-CAR ATTACHED GARAGE | PATIO

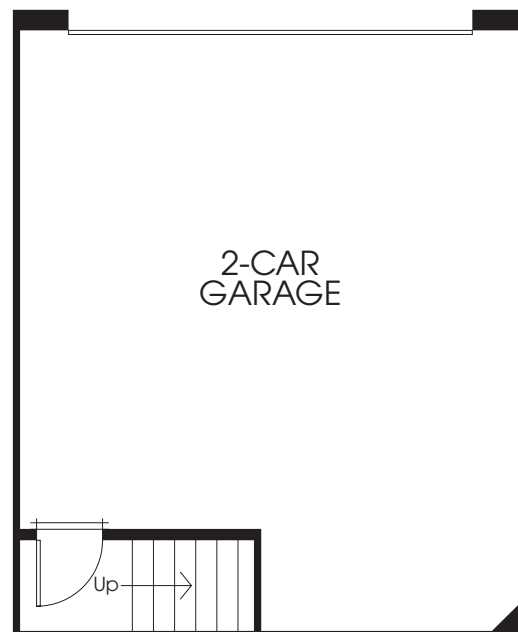


APPROX. 1,161 SQ. FT. | 2 BEDROOMS  
2 BATHS | 2-CAR ATTACHED GARAGE | DECK

*residence*  
**2R**



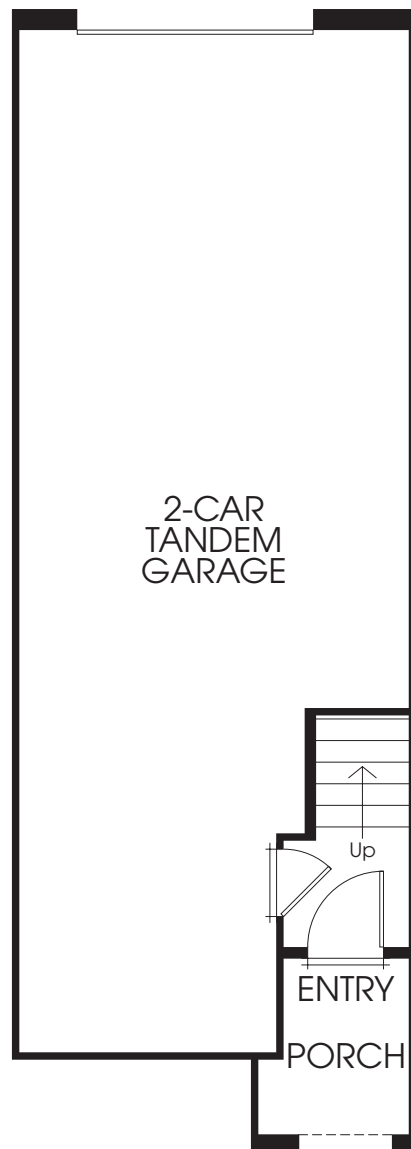
**SECOND FLOOR**



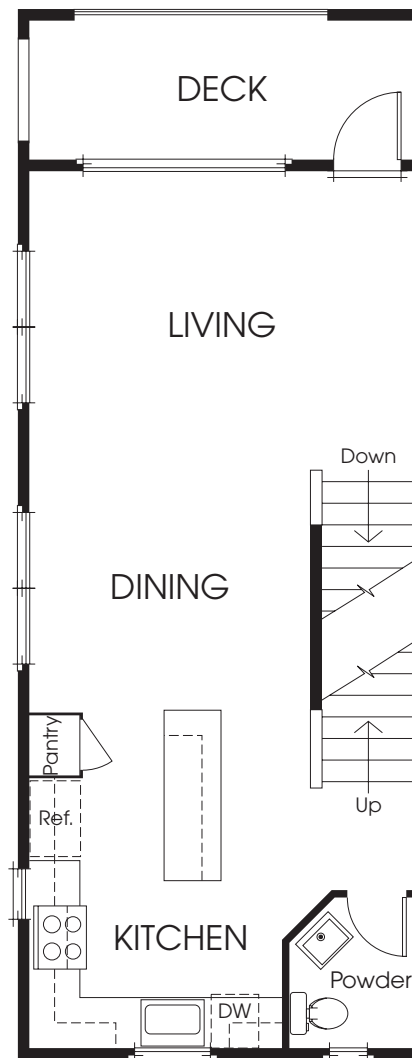
**FIRST FLOOR**

All window sizes, shapes and configurations vary by elevation and/or location. Decks, courtyard size and configuration vary by building type and location.

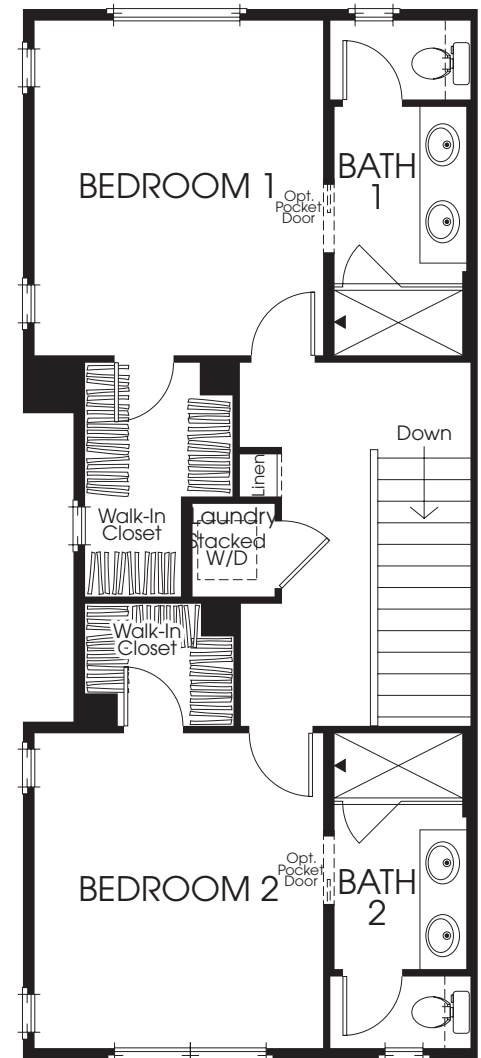
APPROX. 1,327 SQ. FT. | 2 BEDROOMS | 2.5 BATHS  
2-CAR ATTACHED TANDEM GARAGE | DECK



FIRST FLOOR



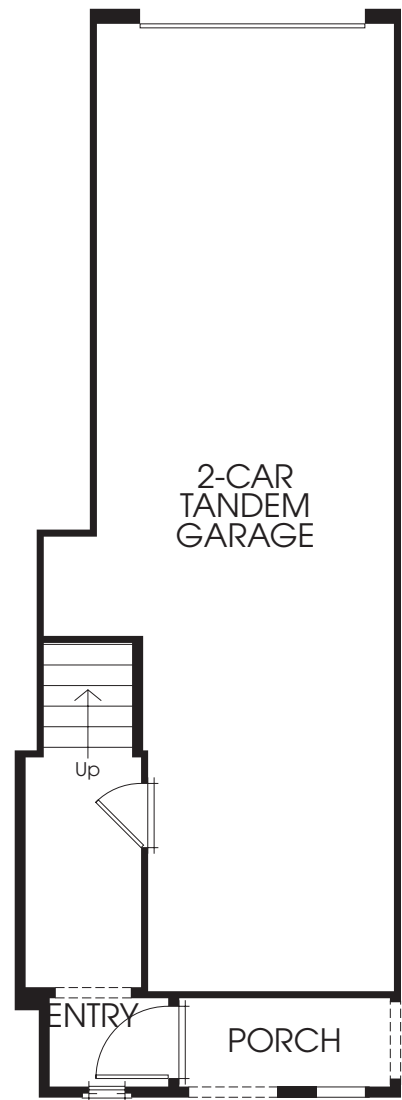
SECOND FLOOR



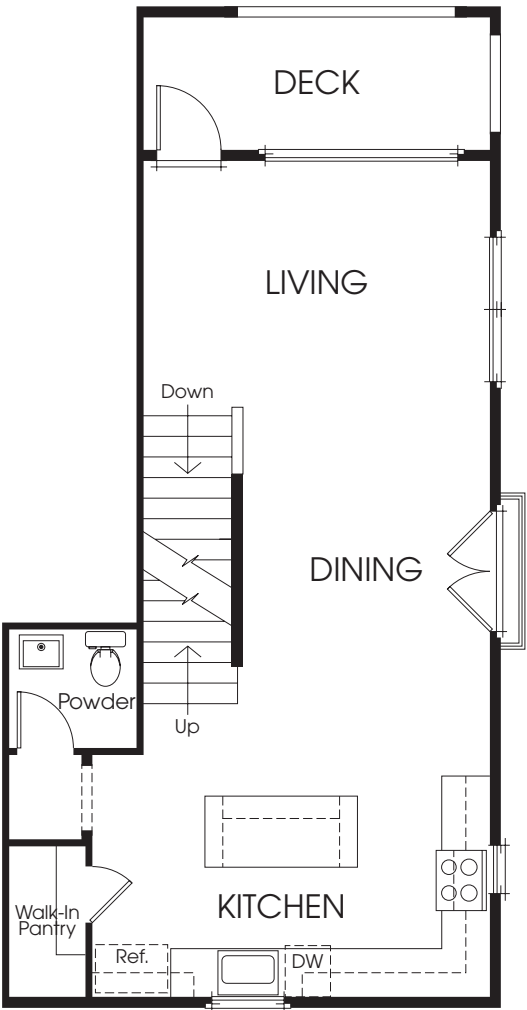
THIRD FLOOR

APPROX. 1,439 SQ. FT. | 2 BEDROOMS | 2.5 BATHS  
2-CAR ATTACHED TANDEM GARAGE | DECK

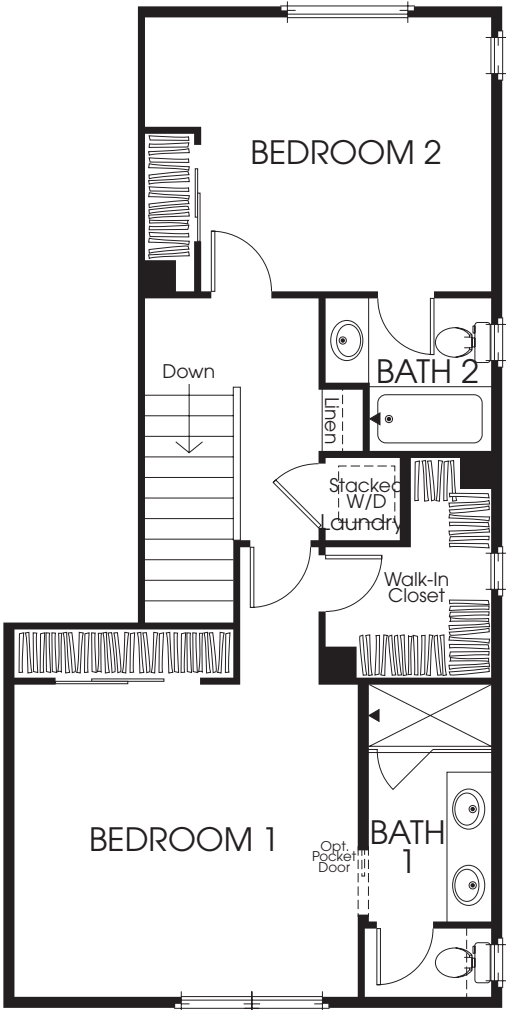
residence  
4R



FIRST FLOOR



SECOND FLOOR

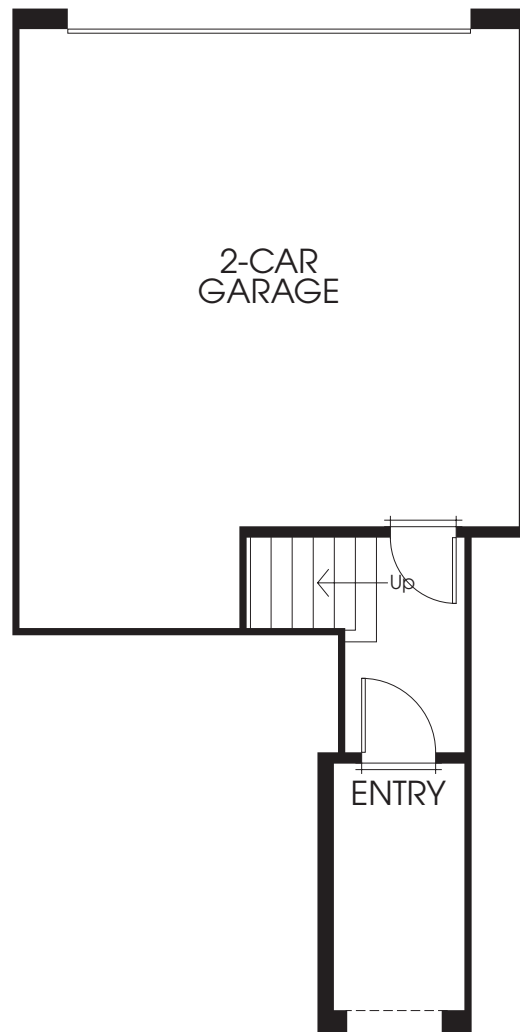


THIRD FLOOR

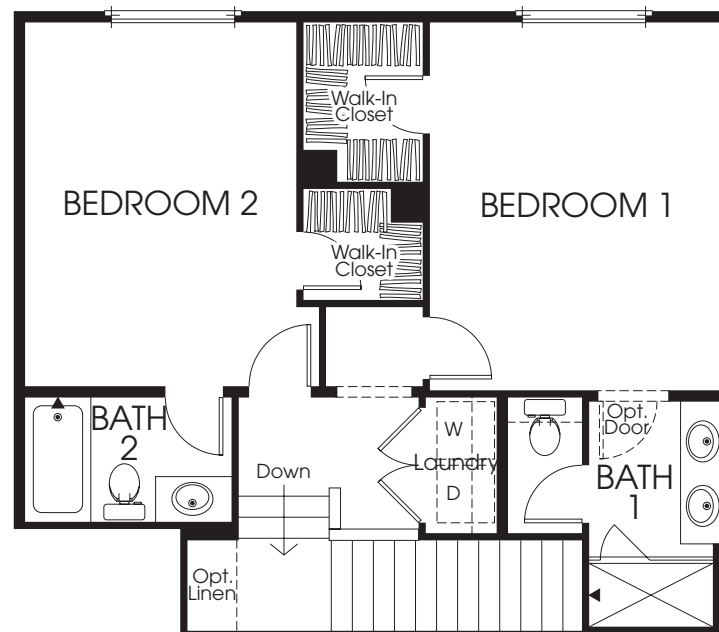
All window sizes, shapes and configurations vary by elevation and/or location. Decks, courtyard size and configuration vary by building type and location.



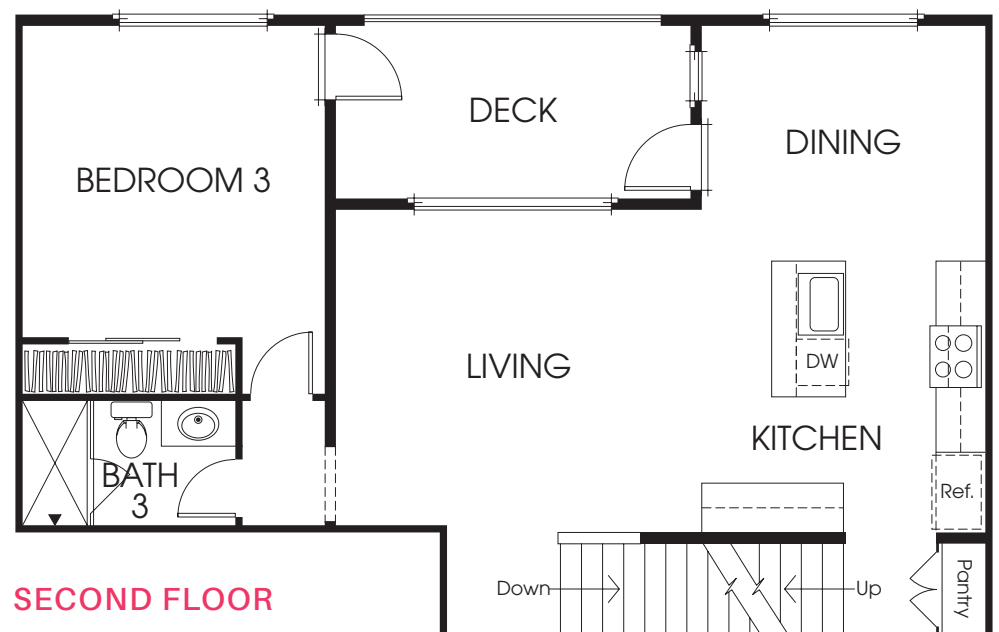
APPROX. 1,591 SQ. FT. | 3 BEDROOMS  
3 BATHS | 2-CAR ATTACHED GARAGE | DECK



FIRST FLOOR



THIRD FLOOR

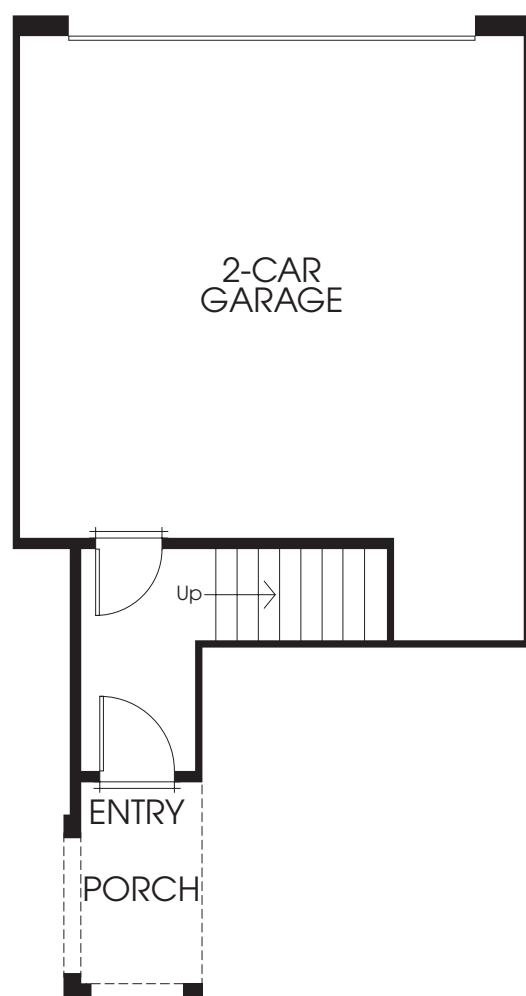


SECOND FLOOR

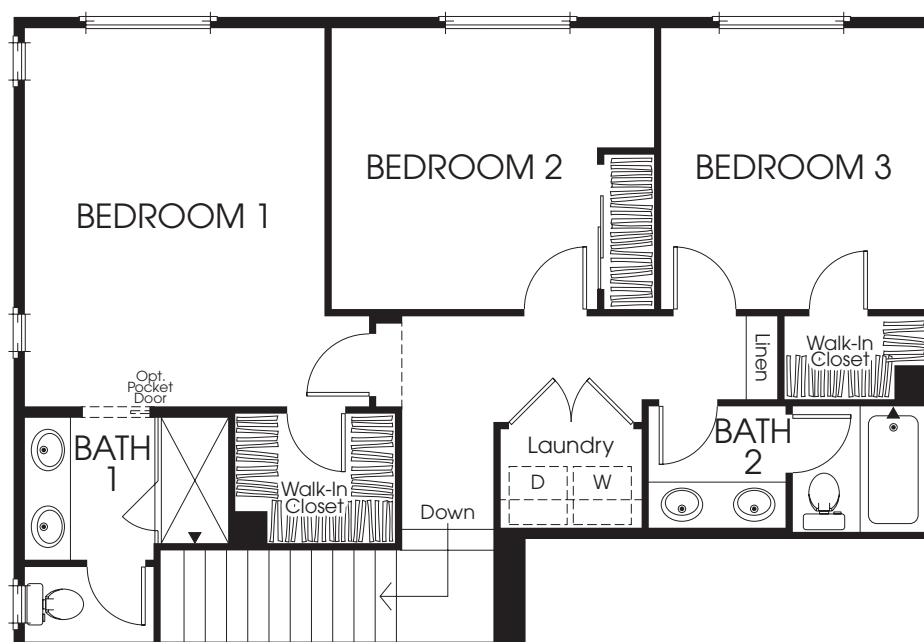


APPROX. 1,694 SQ. FT. | 3 BEDROOMS  
2.5 BATHS | 2-CAR ATTACHED GARAGE | DECK

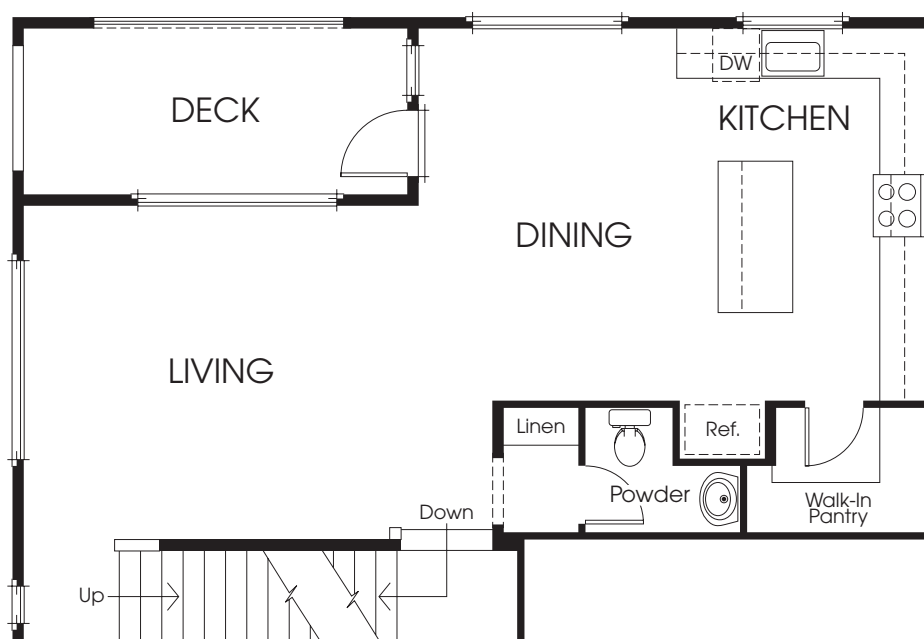
residence  
6R



FIRST FLOOR



THIRD FLOOR



SECOND FLOOR

# *stunning* DETAILS

## LIFESTYLE KITCHENS

- LG Appliance Package in Stainless Steel Includes 5-Burner Gas Free Standing Range, Microwave/Hood and Dishwasher
- White Thermofoil Cabinets with Contemporary Style Slab Doors, Satin Nickel Knobs and Under Cabinet Task Lighting
- Della Terra Quartz Kitchen Countertops in White Sand-N with 6" Splash and Full Splash at Cooktop
- Generous Island Per Plan
- Sterling Stainless Steel Single Basin Sink with Moen Genta Spot Resistant Stainless Steel Finish Faucet
- Cabinet Depth Refrigerator Space Pre-plumbed for Ice Maker

## LUXURIOUS MAIN SUITES

- Main Bath (Bath #1) Features Fiberglass Stall Shower with Subway Tile Look Surround and Clear Glass Enclosure in Polished Chrome
- Vanity Includes Dual Under Mount Sinks with Cultured Marble Countertop and Moen Genta Polished Chrome Faucets
- Private Commode with Upper Cabinets (Per Plan)
- Spacious Walk-in Closets

## INTERIOR LIVING

- White Thermofoil Cabinets with Contemporary Style Slab Doors and Satin Nickel Knobs
- Ceramic Tile Flooring at Entry, Kitchen, Baths and Laundry with Designer Selected Carpet Throughout Living Areas
- Two Panel Smooth Interior Doors with Schlage Andover Knobs in Satin Nickel
- Bullnose Corners Throughout
- LED Recessed Lighting (Standard Locations Vary Per Plan)
- Structured Wiring with Enhanced CAT-6 Wire to Support Phone and High Speed Internet
- Multi-media Outlet to Support Phone/Data and Television at Great Room. TV and Data Outlet Standard at All Bedrooms.
- Powder Room (in Various Plans) Includes Gerber Blaze Pedestal Sink with Moen Genta Polished Chrome Faucet and Framed Mirror
- Conveniently Located Interior Laundry

## ARCHITECTURAL AND ENVIRONMENTALLY EFFICIENT DETAILS

- Spanish Colonial Style Exteriors with Concrete Tile Roofs
- Residence 1 Includes Gated Patio Entry
- Attached 2-Car Garage Includes Insulated Metal Roll-up Garage Door with Opener and Two Transmitters
- Creative and Environmentally Conscious Landscaped Walkways and Common Areas

- Energy Efficient Low-E Glass Vinyl Windows
- Lemieux Wood or Thermatru Fiberglass Entry Door (Determined by Location) with Montana Forge Tuscan Bronze Entry Hardware
- Thermatru Rustic Series Front Entry Doors with Baldwin Evolved Cody Full Handle Hardware in Venetian Bronze. Plans 3, 4, 5 and 6 Include Frosted Glass at Various Locations
- High Efficiency Heat Pump Heating & Cooling Systems with Programmable Thermostats
- Efficient Tankless Water Heater
- Energy Efficient Radiant Barrier Roof
- Fire Sprinklers
- Smart Home Package Includes “White Glove” Homeowner Orientation and Walk-Through
- Energy Saving Solar Panels

## MAKE IT YOUR *own*

Your home is your oasis; a place to express your personal vision. The California Pacific Homes Design Center offers a myriad of options from traditional to modern influences with the latest in design styles, finishes, textures and treatments. Our Design Counselors will provide assistance every step of the way to create your own unique living space.

Designing and building homes graced with classic luxury and unprecedented style is our business; cultivating relationships and building futures is our mission.

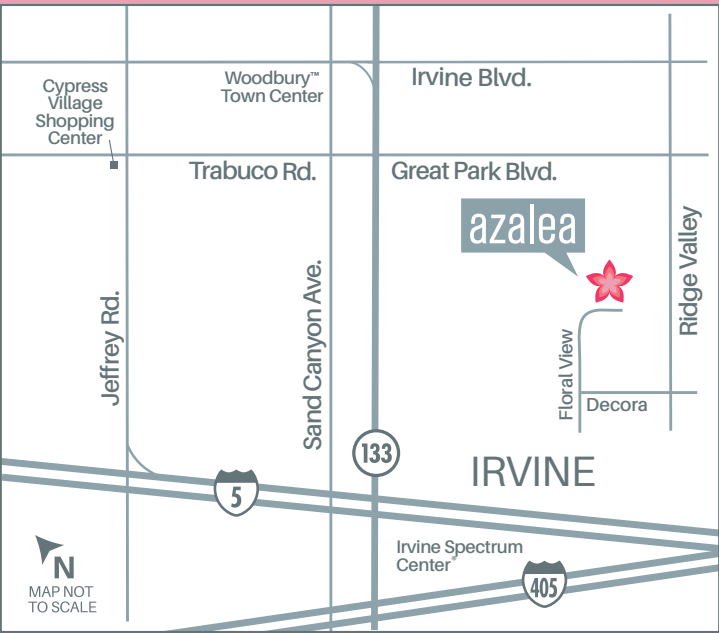
California Pacific Homes appreciates that you have choices, and we are privileged you have entrusted us to build your new home. Our philosophy of creating remarkable residential opportunities that are defined by architectural integrity and extraordinary craftsmanship is enhanced by our desire to build connections between our team and every homeowner.

## A LEGACY OF QUALITY AND COMMITMENT

At California Pacific Homes, we are committed to bringing the art and expertise of homebuilding to the next level. We are driven by innovation, the energy of fresh ideas, and the value of forward thinking. An extraordinary approach to elegance, attention to detail, and solid construction is evident in each of our residences, while the enduring appeal of individual neighborhoods is complemented by their coveted locations. It is our honor to build for you. Welcome to the California Pacific Homes family.

CALIFORNIA  
PACIFIC  
HOMES





108 Coastal Garden, Irvine 92618

949.833.6156

CALPACIFICHOMES.COM



CALIFORNIA  
PACIFIC  
HOMES

©2021 California Pacific Homes. All renderings, floorplans, amenities, facilities and maps portrayed in this brochure are artists' renderings of the improvements proposed for Azalea. Actual development of the homes in Azalea may result in changes to the specifications, materials, designs, improvements, elevations, square footages, unit and lot sizes or any other alteration deemed necessary. Windows, walls, porches, balconies, decks and courtyards, doors, storage and garages vary per home location. Availability in all price ranges is subject to prior sale. Prices and product availability are subject to change without notice. As a resident of Irvine you automatically become a member of the Homeowner's Association. Monthly association dues maintain the quality of common area facilities. Irvine is included in an Assessment District and Community Facilities (Mello Roos) District. Cypress Village is a planned community developed by Irvine Community Development Company LLC, an affiliate of The Irvine Company LLC. "Masterfully Planned by the Irvine Company" means that the Irvine Company created the master land plan for all Irvine Company communities. The "master land plan" includes the overall entitlement and design of each community but does not include the design, construction and sale of homes. The design, construction and sale of homes is the sole responsibility of community builders. The Irvine Company is not designing, constructing or offering homes for sale in any community. Models do not reflect racial preference. DRE License #01277135.

 **Villages of Irvine®**  
Masterfully Planned by the Irvine Company